

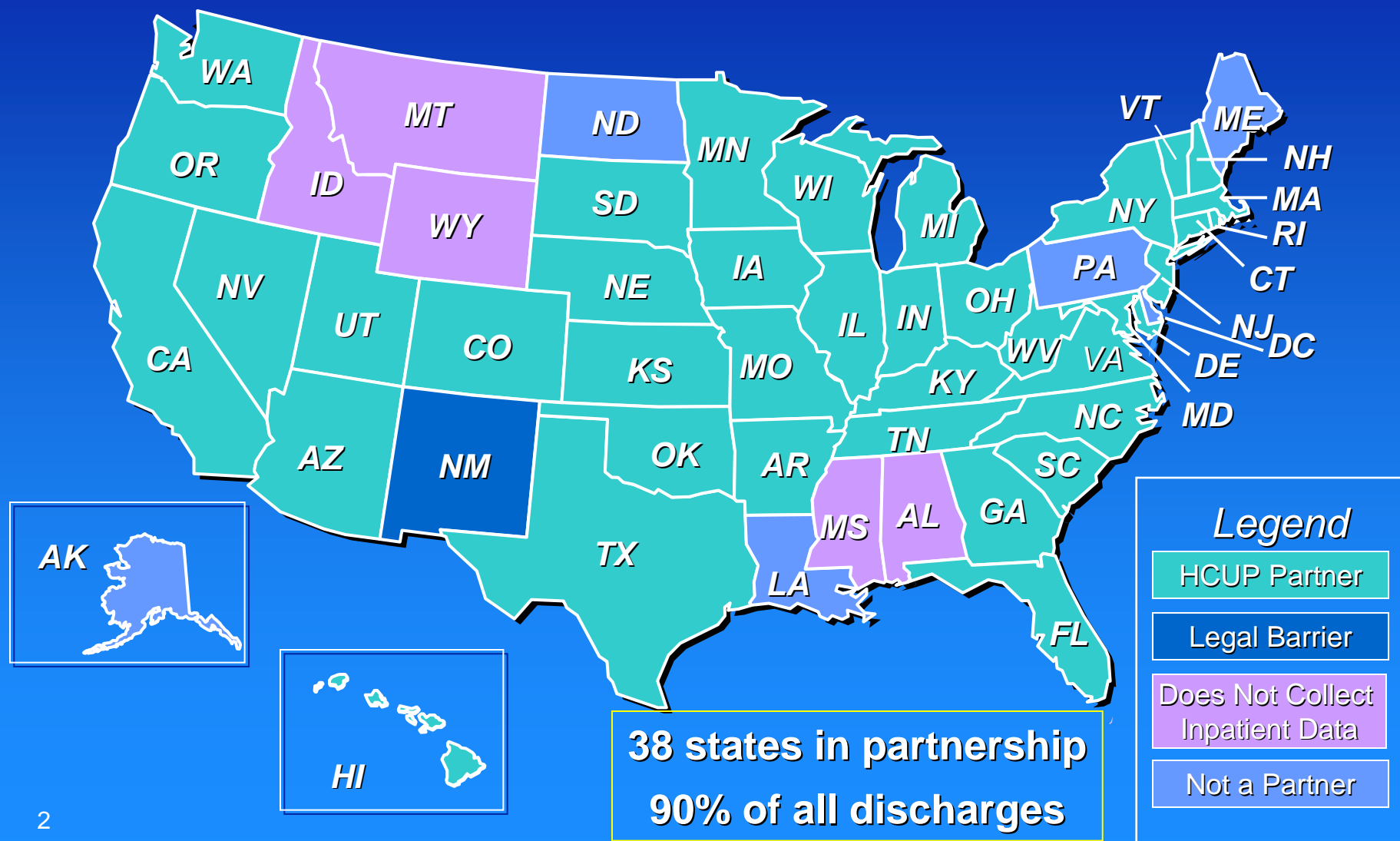


Healthcare Cost and Utilization Project (HCUP)

***Healthcare Data and Tools
... And an Overview of HCUPnet***

Anne Elixhauser, Ph.D.

**State Healthcare Quality Improvement Workshop
December 7, 2007—Philadelphia, PA**



The Foundation of HCUP is Billing Data



UB-92 (UB-04) Billing Form

2 PREMIER HOSPITAL SERVICE 234 Seaway St COLUMBIA, MO 65202										3 PATIENT CONTROL NO. 72255589										4 TYPE OF BILL 111																							
5 FEE TAX NO. 32-9524430										6 STATEMENT COVERS PERIOD 19961222 - 19981222										7 CDD 10		8 CND 9		9 CDD 8		10 RCD 7		11															
12 PATIENT NAME BARNES, ANNA L										13 PATIENT ADDRESS 420 LINCOLN AVE DENVER, CO 80211																																	
14 BIRTH DATE 19691125										15 SEX F		16 H W 20040115		17 DATE 09		18 ADMISSION 19		19 TYPE 11		20 HRS 16		21 D HRS 01		22 MEDICAL RECORD NO AAAAAAAAAAAAAAAAAA		23 03		24 04		25 05		26 06		27 07		28 08		29 09		30 10		31 11	
32 OCCURRENCE CODE		33 DATE		34 OCCURRENCE CODE		35 DATE		36 OCCURRENCE CODE		37 DATE		38 OCCURRENCE CODE		39 DATE		40 OCCURRENCE CODE		41 DATE		42 OCCURRENCE CODE		43 DATE		44 OCCURRENCE CODE		45 DATE		46 OCCURRENCE CODE		47 DATE		48 OCCURRENCE CODE		49 DATE		50 OCCURRENCE CODE		51 DATE					
01		20040226		02		20040226		03		20040226		04		20040226		05		20040226		06		20040226		07		20040226		08		20040226		09		20040226		10		20040226					
05		20040226		06		20040226		07		20040226		08		20040226		09		20040226		10		20040226		11		20040226		12		20040226		13		20040226		14		20040226					
01		20040226		02		20040226		03		20040226		04		20040226		05		20040226		06		20040226		07		20040226		08		20040226		09		20040226		10		20040226					
05		20040226		06		20040226		07		20040226		08		20040226		09		20040226		10		20040226		11		20040226		12		20040226		13		20040226		14		20040226					
01		20040226		02		20040226		03		20040226		04		20040226		05		20040226		06		20040226		07		20040226		08		20040226		09		20040226		10		20040226					
05		20040226		06		20040226		07		20040226		08		20040226		09		20040226		10		20040226		11		20040226		12		20040226		13		20040226		14		20040226					
01		20040226		02		20040226		03		20040226		04		20040226		05		20040226		06		20040226		07		20040226		08		20040226		09		20040226		10		20040226					
05		20040226		06		20040226		07		20040226		08		20040226		09		20040226		10		20040226		11		20040226		12		20040226		13		20040226		14		20040226					
01		20040226		02		20040226		03		20040226		04		20040226		05		20040226		06		20040226		07		20040226		08		20040226		09		20040226		10		20040226					
05		20040226		06		20040226		07		20040226		08		20040226		09		20040226		10		20040226																					

Patient demographics (age, sex)

Diagnoses & procedures (ICD-9-CM, DRG)

Expected payer

Length of stay

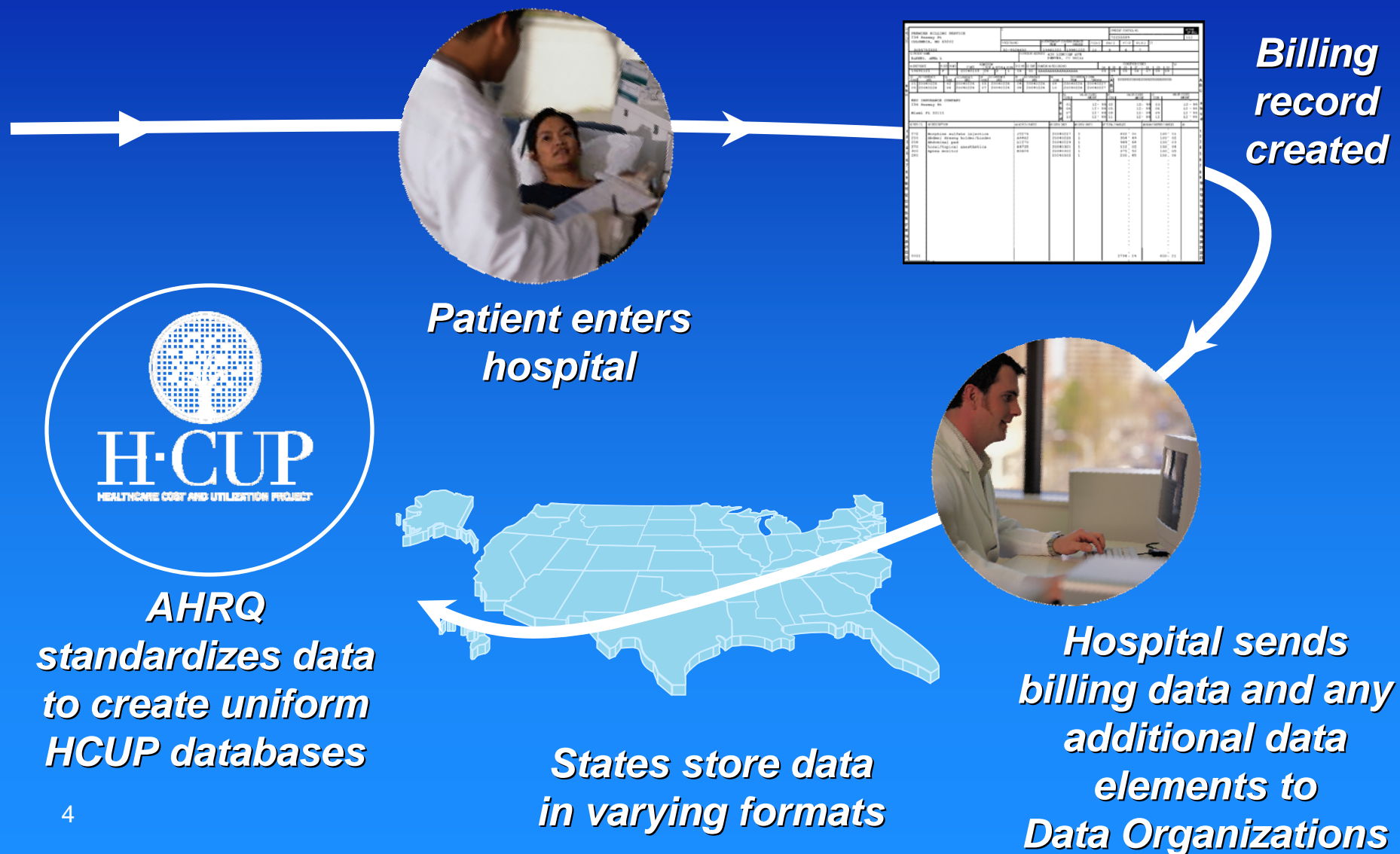
Patient disposition

Admission source & type

Admission month

Charges

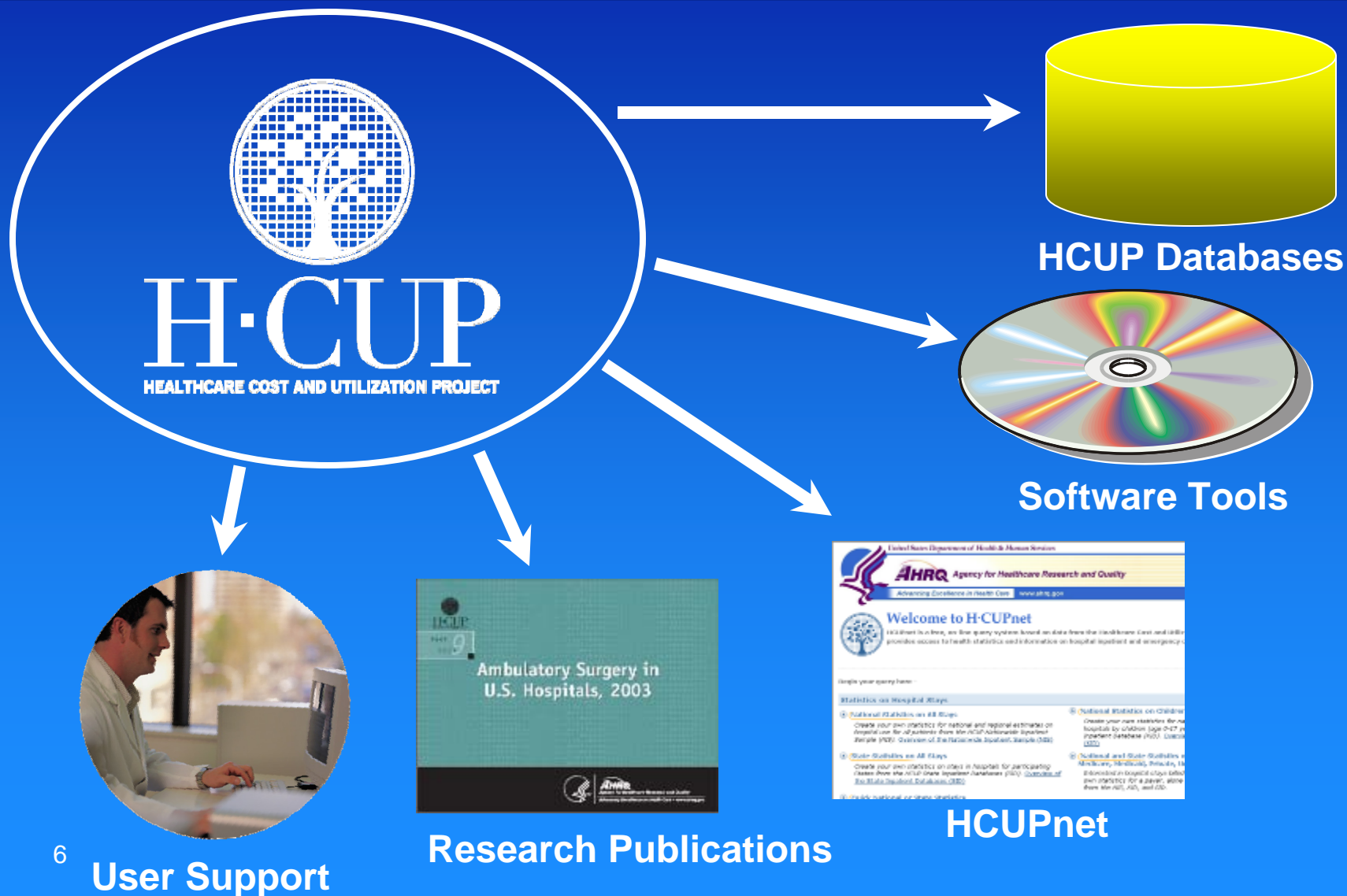
The Making of HCUP Data



What is HCUP? And what is it not?

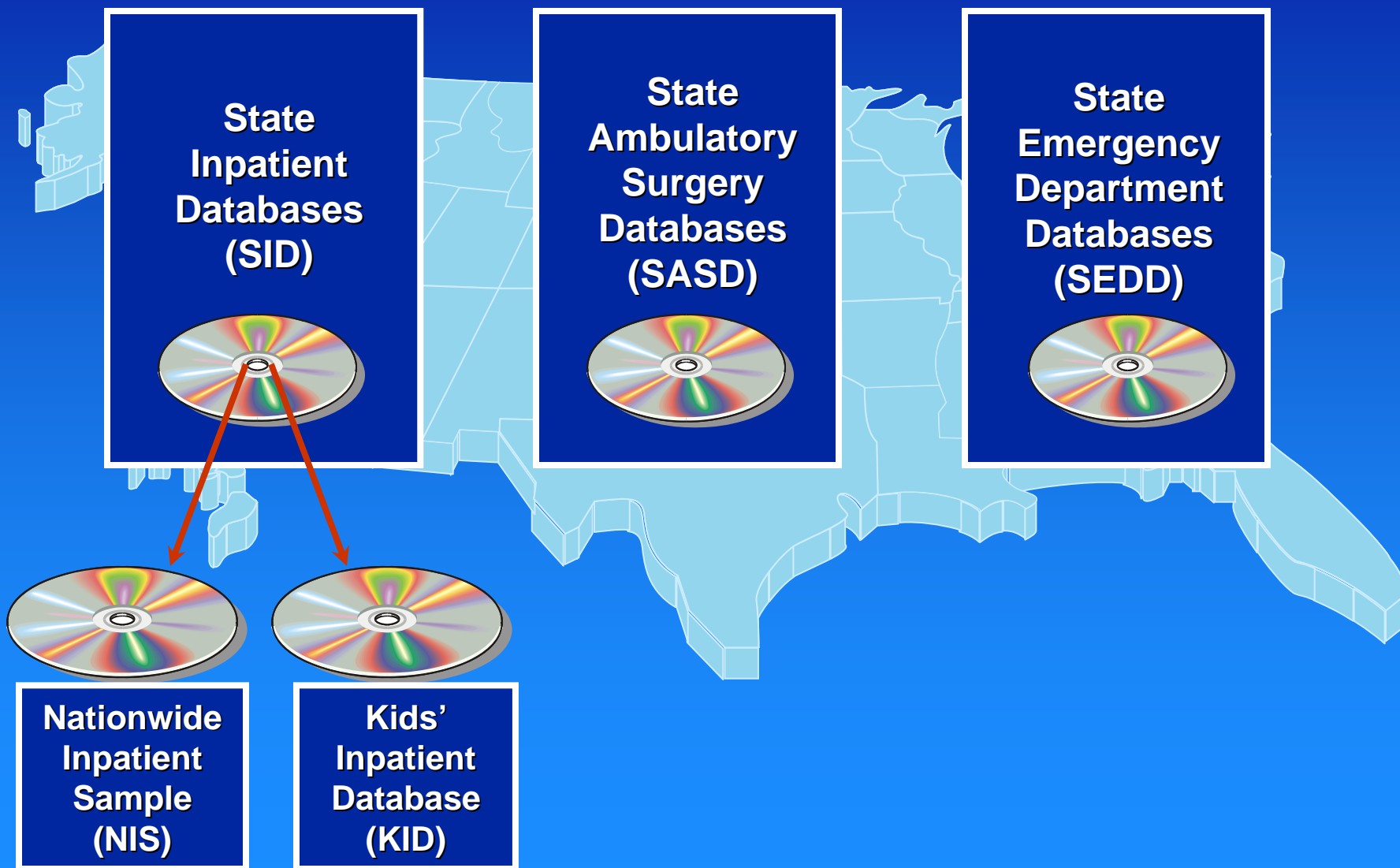
What it is	What it is not
Claims (bills) for health care encounters	<i>A survey</i>
All payer, including the uninsured	<i>Specific to a single payer, e.g. Medicare</i>
Hospital, ambulatory surgery, emergency department data	<i>Outpatient visits, pharmacy, laboratory</i>
All claims	<i>A sample</i>
Accessible multiple ways: raw data, regular reports, on-line	<i>Just another database</i>

HCUP is a Family of Databases, Tools, Products



HCUPnet

Types of HCUP Databases





HCUP Supports High Impact Health Services, Policy, and Clinical Research



HCUP Supports Federal and Non-Federal Initiatives



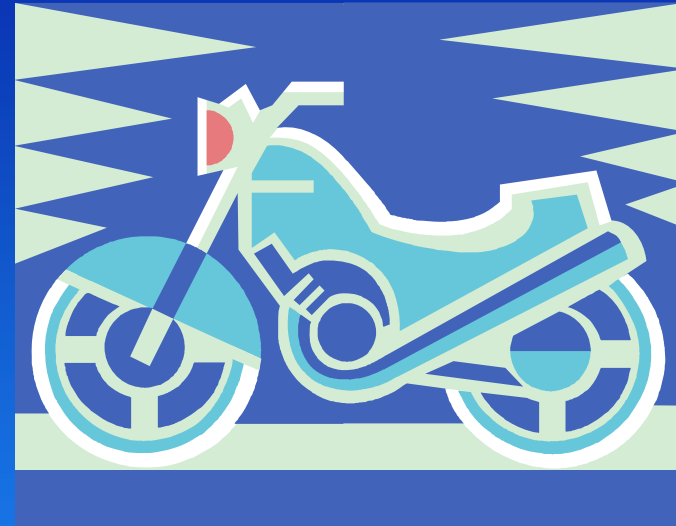


Supports Policy Deliberations and Legislation

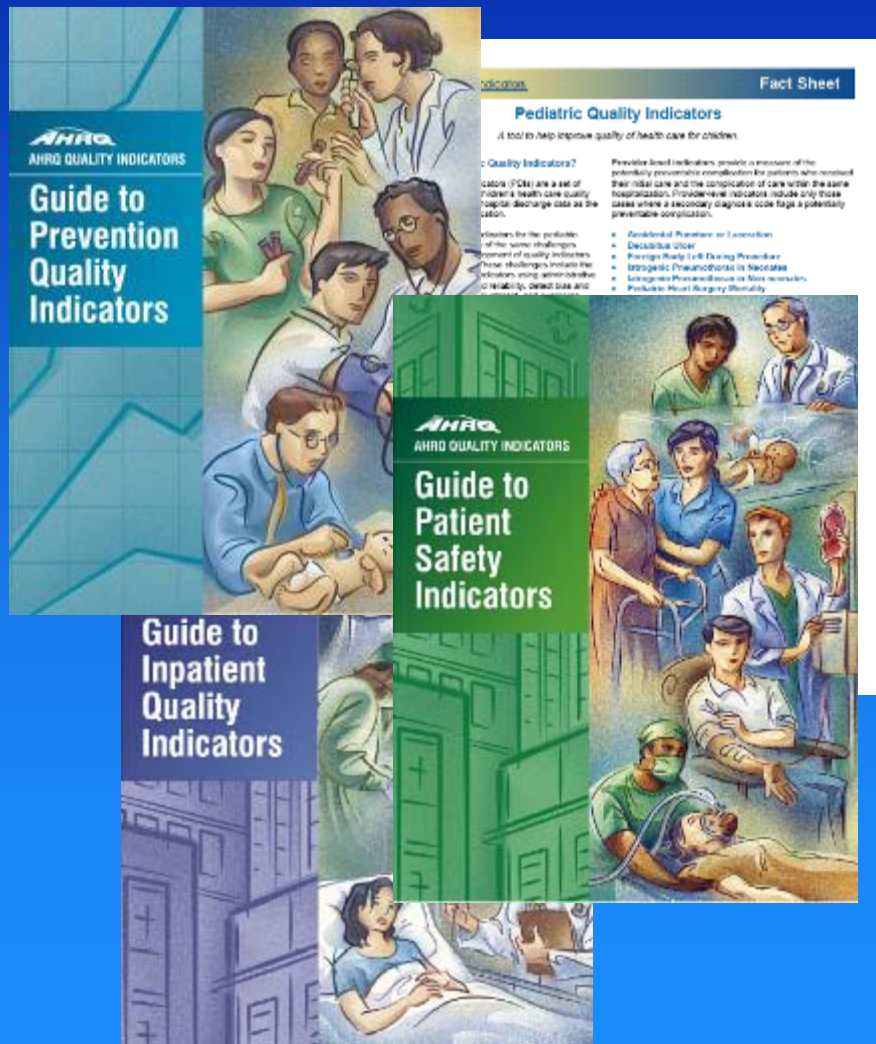


HCUP was used to
determine national and
state burden of hospital
care following motorcycle
injuries

Analyses used in West
Virginia's hearings to
remove their motorcycle-
helmet law



AHRQ Quality Indicators

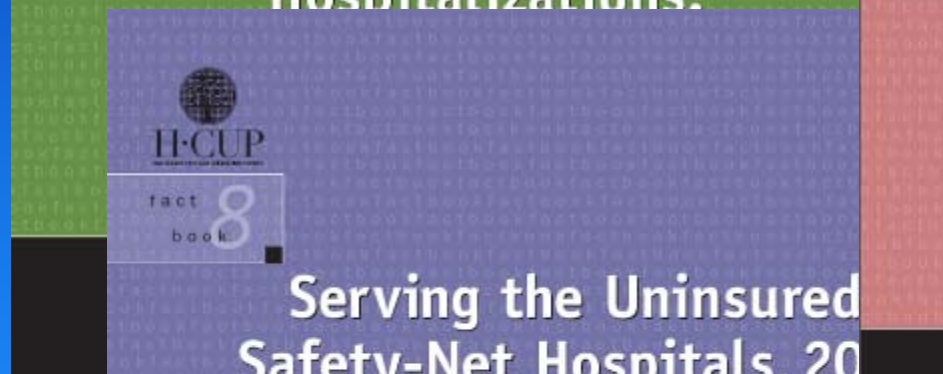


- Most widely used HCUP tool
- Used for reporting hospital quality of care
- AHRQ provides benchmarks against which to compare your numbers

HCUP Fact Books



Preventable Hospitalizations:



Serving the Uninsured Safety-Net Hospitals, 2004



Care of Adults With Mental Health and Substance Abuse Disorders in U.S. Community Hospitals, 2004





STATISTICAL BRIEF #36

August 2007

Trends in Potentially Preventable Hospitalizations among Adults and Children, 1997-2004

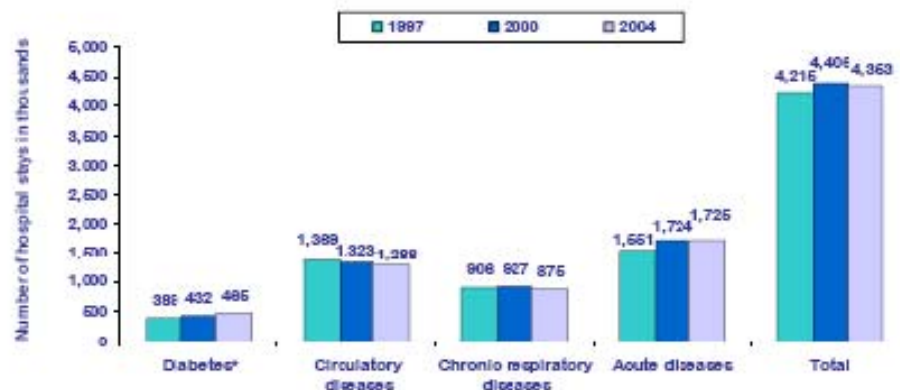
Allison Russo, M.P.H., H. Joanna Jiang, Ph.D., Marguerite Barret

Introduction

Because of major concerns with both the cost and quality of health care, a priority of policy makers and health care providers is to identify areas where quality improvement and lower costs coincide. Potentially preventable admissions—inpatient stays that could be prevented with high quality primary and preventive care—are an area where higher quality care can cost less. Higher rates of “preventable hospitalizations” identify areas where potential improvements in the health care delivery system could be made to improve patient outcomes and decrease costs. Changes in the rates over time may signal an improvement or worsening in the quality of ambulatory care, in access to timely and effective treatment of certain conditions for specific populations, or in the adoption of healthy behaviors.



Figure 1. Trends of total hospital stays for potentially preventable conditions, 1997-2004



*The diabetes category includes hospital stays for uncontrolled diabetes without complications, short-term diabetes complications, and long-term diabetes complications.

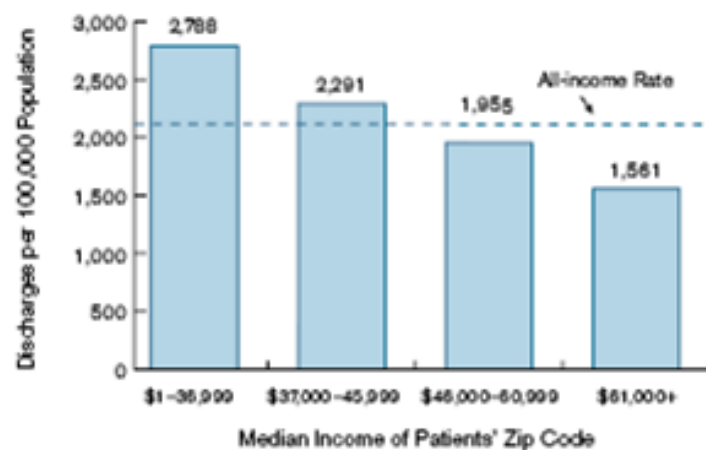
Source: AHRQ, Center for Delivery, Organization, and Markets, Healthcare Cost and Utilization Project, Nationwide Inpatient Sample, 1997, 2000, and 2004.

Other Statistical Briefs Include:

- Hospital stays related to depression
- Trends in risk-adjusted mortality
- Trends in preventable hospitalizations
- Infections with MRSA in U.S. hospitals
- Childbirth-related stays in U.S. hospitals
- Adverse drug events
- Admissions for traumatic brain injury
- Bariatric surgery utilization and outcomes
- The national hospital bill
- ...

Facts and Figures

Discharge Prevalence for All-listed Diabetes
by Median Income of Patients' Zip Code,* 2005



HCUP FACTS AND FIGURES:

STATISTICS ON HOSPITAL-BASED CARE
IN THE UNITED STATES, 2005





HCUPnet: Quick, Free Access to HCUP Data



- Free, interactive online query system
- Users generate tables of outcomes by diagnoses and procedures
- Data can be cross-classified by patient and hospital characteristics

<http://hcupnet.ahrq.gov>



United States Department of Health & Human Services



Agency for Healthcare Research and Quality

Advancing Excellence in Health Care

www.ahrq.gov



Welcome to H-CUPnet

HCUPnet is a free, on-line query system based on data from the Healthcare Cost and Utilization Project (HCUP). It provides access to health statistics and information on hospital inpatient and emergency department utilization.

Begin your query here -

Statistics on Hospital Stays

National Statistics on All Stays

Create your own statistics for national and regional estimates on hospital use for all patients from the HCUP Nationwide Inpatient Sample (NIS). [Overview of the Nationwide Inpatient Sample \(NIS\)](#)

State Statistics on All Stays

Create your own statistics on stays in hospitals for participating States from the HCUP State Inpatient Databases (SID). [Overview of the State Inpatient Databases \(SID\)](#)

Quick National

Ready-to-use tables on commonly requested information from the HCUP Nationwide Inpatient Database (KID), or

National Statistics on Children

Create your own statistics for national estimates on use of hospitals by children (age 0-17 years) from the HCUP Kids' Inpatient Database (KID). [Overview of the Kids' Inpatient Database \(KID\)](#)

National and State Statistics on Hospital Stays by Payer - Medicaid, Private, Uninsured

Stays billed to a specific payer? Create your own statistics by payer, alone or compared to other payers from the HCUP State Inpatient Database (SID).

Statistics on Emergency Department Visits

State Statistics on Emergency Department Visits

Create your own statistics on emergency department visits for participating States from the HCUP State Emergency Department Databases (SEDD) and the SID. [Overview of the State Emergency Department Databases \(SEDD\)](#)

Ready-to-use tables on commonly requested information from the SEDD and SID.

AHRQ Quality Indicators (QIs)

[Skip Navigation](#)

- [AHRQ Home](#)
- [Questions?](#)
- [Contact Us](#)

HCUPnet is a powerful online query tool that gives you free, instant access to healthcare statistics.

HCUPnet provides national information on hospital stays based on the Nationwide Inpatient Sample.

- 2005 nationwide data now available.
- Information on use of Emergency Departments from selected States.
- 2004 nationwide data on AHRQ Quality Indicators.
- 2005 data for selected States.
- Payer path - statistics by payer, including dually eligible.
- 2003 data for Kids' Inpatient Database (KID).



[More information on HCUP data, tools, and reports](#)

What is HCUP?

Brief description - what is HCUP? Want to purchase data to do your own analysis?

The statistics in HCUPnet would not be possible without statewide data collection projects that provide data to HCUP.

HCUPnet is based on aggregate data from all participating hospitals.

Select State and year:

State	2005	2004	2003	2002	2001	2000	1999	1998	1997	
Arizona	▶	▶	▶	▶	▶	▶	▶	▶	▶	Link to State Web site
Arkansas	▶	▶								Link to State Web site
California	▶	▶	▶	▶	▶	▶	▶	▶	▶	Link to State Web site
Colorado	▶	▶	▶	▶	▶	▶	▶	▶	▶	Link to State Web site
Florida	▶	▶	▶	▶	▶	▶	▶	▶	▶	Link to State Web site
Hawaii	▶	▶	▶	▶	▶	▶	▶	▶	▶	Link to State Web site
Iowa	▶	▶	▶	▶	▶	▶	▶	▶	▶	Link to State Web site
Kentucky	▶	▶	▶	▶	▶					Link to State Web site
Maine			▶	▶	▶					Link to State Web site
Massachusetts	▶	▶	▶	▶	▶	▶	▶	▶	▶	Link to State Web site
Michigan	▶	▶	▶	▶	▶					Link to State Web site
Minnesota	▶	▶	▶	▶	▶					Link to State Web site
Missouri	▶	▶	▶	▶	▶					Link to State Web site
Nebraska	▶	▶	▶	▶	▶					Link to State Web site
Nevada	▶	▶	▶	▶						Link to State Web site
New Hampshire	▶	▶	▶							Link to State Web site
New Jersey	▶	▶	▶	▶	▶	▶	▶	▶	▶	Link to State Web site
New York	▶	▶	▶	▶	▶	▶	▶	▶	▶	
North Carolina	▶	▶	▶	▶	▶	▶				
Oklahoma	▶									
Oregon	▶	▶	▶	▶	▶	▶	▶	▶	▶	
Rhode Island	▶	▶	▶	▶						
South Carolina	▶	▶	▶	▶	▶	▶	▶	▶	▶	
Utah	▶	▶	▶	▶	▶	▶	▶	▶	▶	
Vermont	▶	▶	▶	▶	▶					Link to State Web site
Washington	▶	▶	▶	▶	▶	▶	▶	▶	▶	Link to State Web site
West Virginia	▶	▶	▶	▶	▶					Link to State Web site
Wisconsin	▶	▶	▶	▶	▶					Link to State Web site

Statistics are based on the definition of "corresponding short-term, general inpatient care" including public hospitals. Exclude psychiatric hospital dependency tree.

... and it gives access to data from participating states from HCUP's State Inpatient Databases.



United States Department of Health & Human Services



Agency for Healthcare Research and Quality

Advancing Excellence in Health Care

www.ahrq.gov



HCUPnet

Information on stays in hospitals for participating States from the HCUP State Inpatient Databases (SID)

[HCUPnet Home](#)

[Lay or
researcher](#)

Select the type of query you want:

▶ [Statistics on specific diagnoses or procedures](#)

Information on specific diagnoses and procedures for a single year (select year on the next page)

▶ [Statistics on all hospital stays](#)

Information on all stays for a specific year, not by diagnoses or procedures (select year on the next page)

▶ [Trends](#)

State trends on all stays, diagnoses, and procedures

▶ [Rank order specific diagnoses or procedures](#)

Rank diagnoses or procedures by key outcomes and measures such as number of discharges and total charges

HCUPnet takes you through a step-by-step process to select the information you want.

Advancing Excellence in

[Home](#) | [Privacy Policy](#) | [Freedom of Info:](#)

[The U.S. Government's Official Web Pr](#)



United States Department of Health & Human Services



Agency for Healthcare Research and Quality

Advancing Excellence in Health Care

www.ahrq.gov



H-CUPnet

Information on stays in hospitals for participating States from the HCUP State Inpatient Databases (SID)

HCUPnet Home

Lay or
researcher

Select type
of query

Select
state

Select diagnoses
or procedures

Principal
or all-listed

Select
codes

Do you want information on:

- ▶ Diagnoses grouped by Clinical Classifications Software (CCS)?

You can search for specific conditions and groups of conditions under this option.

- ▶ Specific diagnoses by ICD-9-CM?

You will need to use an ICD-9-CM coding manual to identify ICD-9-CM codes for this option.

- ▶ Diagnosis Related Groups (DRG)?

You can search for specific DRGs under this option.

- ▶ Major Diagnostic Categories (MDC)?

You can search for specific MDCs under this option.

- ▶ Procedures grouped by Clinical Classifications Software (CCS)?

You can search for specific procedures and groups of procedures under this option.

- ▶ Specific procedures by ICD-9-CM?

You will need to use an ICD-9-CM coding manual to identify ICD-9-CM codes for this option.

- ▶ Related conditions and procedures?

You select the level of
diagnosis and procedure
information: ICD codes,
Clinical Classifications, DRGs.

Clip
pa
of

IC
Dis
(or
ho

Di.
cla
are
res

Ma
DR
sy:
eti

Re
to
re



United States Department of Health & Human Services



Agency for Healthcare Research and Quality

Advancing Excellence in Health Care

www.ahrq.gov



H-CUPnet

Information on stays in hospitals for participating States from the HCUP State Inpatient Database

HCUPnet
Home

Lay or
researcher

Select type
of query

Select
state

Select
diagnoses
or procedures

Principal
or all-listed

Select
codes

Ve

Select outcomes and measures for which you want statistics

Check one or more

☒ Number of discharges

☒ Length of stay, mean

☐ Length of stay, median

☒ Hospital charges, mean

☐ Hospital charges, median

☒ Percent died in the hospital

☐ Discharge status

☐ Percent admitted from
emergency department

☐ Percent admitted from
another hospital

☐ Percent admitted from
long term care facility

>> Next >>

HCUPnet provides
information on:

- numbers of discharges
- hospital LOS and charges
- discharge status
- how patients were admitted



United States Department of Health & Human Services



Agency for Healthcare Research and Quality

Advancing Excellence in Health Care

www.ahrq.gov



H-CUPnet

Information on stays in hospitals for participating States from the HCUP State Inpatient Databases

[HCUPnet Home](#)

[Lay or
researcher](#)

[Select type
of query](#)

[Select
state](#)

[Select diagnoses
or procedures](#)

[Princi
or all-I](#)

Select patient and hospital characteristics

Check one or more

- ☒ All patients in all hospitals
- ☐ Patient age, in categories
- ☐ Gender
- ☐ Payer (insurance status)
- ☐ Location of patient's residence (rural/urban)
- ☐ Race/ethnicity
- ☐ Hospital ownership (public, for-profit, not-for-profit)?
- ☐ Hospital teaching status (teaching vs. not)?
- ☐ Hospital location (metropolitan vs. non-metropolitan)?
- ☐ Hospital bedsize (small vs. medium vs. large)?

[>> Next >>](#)

Are you interested in particular patient groups? Specific hospital characteristics?

State statistics - 2005 New York - principal procedure only

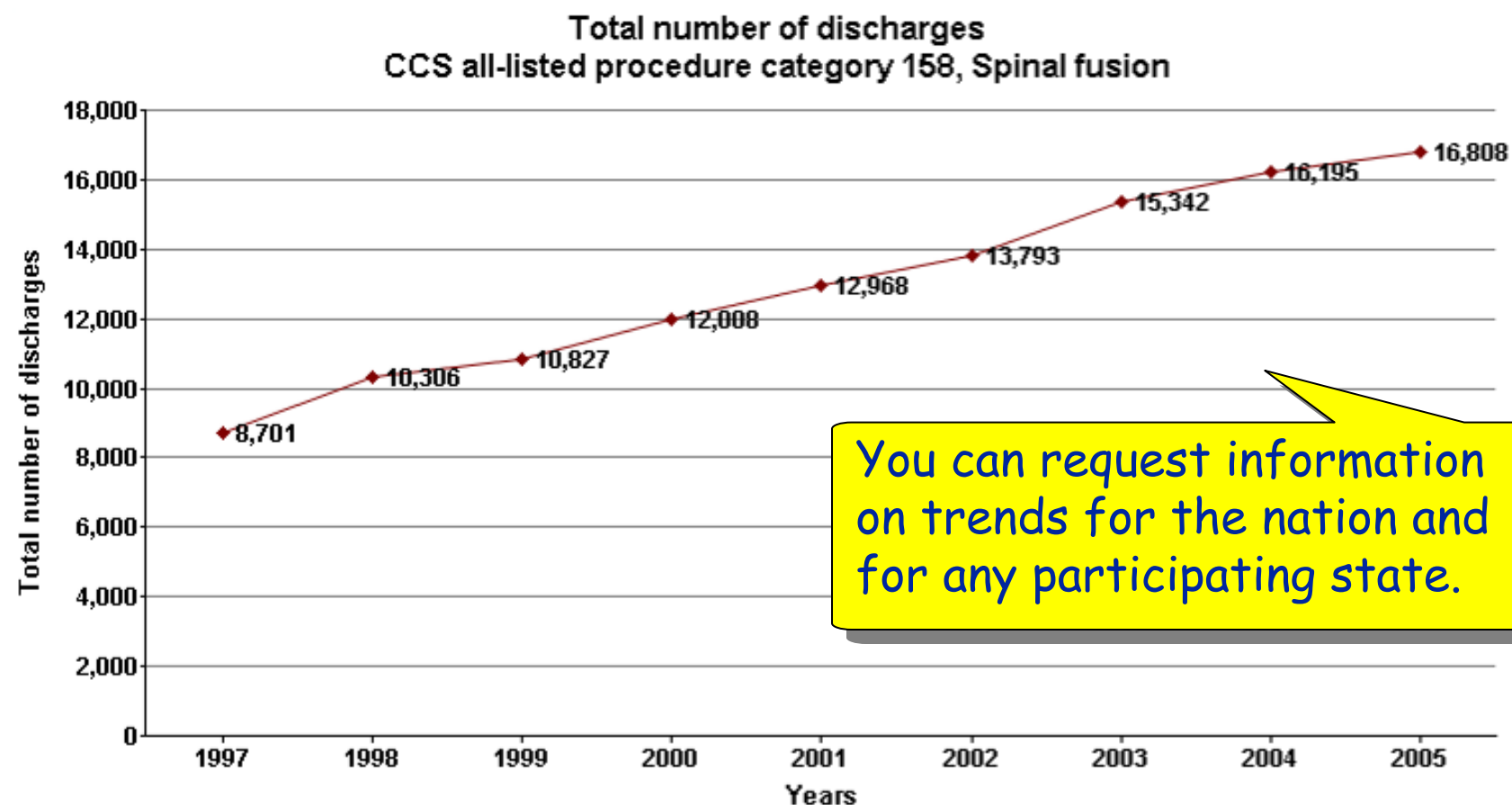
Outcomes by patient and hospital characteristics for CCS principal procedure category 158 Spinal fusion

		Total number of discharges	LOS (length of stay), days (mean)	Charges, \$ (mean)	Admitted from emergency department	In-hospital deaths
All discharges		14,743 (100.00%)	4.9	48,729	974 (6.61%)	41 (0.28%)
Age group	1-17	768 (5.21%)	6.3	76,345	20 (2.60%)	*
	18-44	4,364 (29.60%)	3.9	43,130	264 (6.05%)	*
	45-64	6,636 (45.01%)	4.6	46,757	396 (5.97%)	13 (0.20%)
	65-84	2,860 (19.40%)	6.5	54,293	260 (9.09%)	16 (0.56%)
	85+	115 (0.78%)	8.5	51,974	34 (29.57%)	*
Sex	Male	6,858 (46.52%)	4.9	47,951	555 (8.09%)	28 (0.41%)
	Female	7,883 (53.47%)	4.9	49,406	419 (5.32%)	13 (0.16%)
	Missing	*	*	*	*	*
Payer	Medicare	3,382 (22.94%)	6.5	54,280	301 (8.90%)	24 (0.71%)
	Medicaid	1,062 (7.20%)	6.8	52,110	148 (13.94%)	*
	Private insurance	7,583 (51.43%)	4.3	48,886	412 (5.43%)	*
	Uninsured	164 (1.11%)	7.0	45,107	31 (18.90%)	*
	Other	2,552 (17.31%)	3.6	39,730	82 (3.21%)	*
Residence	Large metro	10,219 (69.31%)	5.2	52,523	760 (7.44%)	36 (0.35%)
	Small metro	3,018 (20.47%)	4.2	41,946	145 (4.80%)	*
	Non-metro	1,466 (9.94%)	4.1	39,730		
	Missing	40 (0.27%)	5.7	63,000		
Race/ethnicity	White	10,362 (70.28%)	4.6	46,886		
	Black	1,350 (9.16%)	6.2	59,000		
	Hispanic	878 (5.96%)	5.8	59,000		
	Asian/Pacific Islander	201 (1.36%)	5.5	50,000		
	Native American	15 (0.10%)	5.7	40,000		
	Other	613 (4.16%)	6.4	59,000		
	Missing	1,324 (8.98%)	4.4	54,000		
Owner	Government	2,378 (16.13%)	5.5	48,000		
	Private, not-for-profit	12,365 (83.87%)	4.8	48,000		

You get your results instantly.
HCUPnet is based on aggregated statistics to speed data transfer and protect patient confidentiality.

State statistics - New York - all-listed

HCUPnet provides trend information for the 9 period: 1997-2005



Number of discharges

CCS all-listed procedure category and name		1997	1998	1999	2000	2001	2002	2003	2004	2005
158	Spinal fusion	8,701	10,306	10,827	12,008	12,968	13,793	15,342	16,195	16,808

Repeat this query on another database:

Nationwide Inpatient Sample (NIS)

- ▶ 2005
- ▶ 2004
- ▶ 2003
- ▶ 2002
- ▶ 2001
- ▶ 2000
- ▶ 1999
- ▶ 1998
- ▶ 1997

Kids' Inpatient Database (KID)

- ▶ 2003
- ▶ 2000
- ▶ 1997

You can repeat your query instantly on another database.

State Inpatient Databases (SID)

State	2005	2004	2003	2002	2001	2000	1999	1998	1997	
Arizona	▶	▶	▶	▶	▶	▶	▶	▶	▶	Link to State Web site
Arkansas	▶	▶								Link to State Web site
California	▶	▶	▶	▶	▶	▶	▶	▶	▶	Link to State Web site
Colorado	▶	▶	▶	▶	▶	▶	▶	▶	▶	Link to State Web site
Florida	▶	▶	▶	▶	▶	▶	▶	▶	▶	Link to State Web site
Hawaii	▶	▶	▶	▶	▶	▶	▶	▶	▶	Link to State Web site



Agency for Healthcare Research and Quality

Advancing Excellence in Health Care

www.ahrq.gov



HCUPnet

Information on encounters that start in the ED for participating States from the HCUP State Inpatient Databases
Emergency Department Databases (SEDD)

HCUPnet Home

Select types
of visits

Select type
of query

Select
state

Results

- ▶ Display a printer-friendly version (Try printing in landscape for best results)
- ▶ Save as an Excel spreadsheet
- ▶ Repeat this query on another database
- ▶ Run a new query on this database - **keep** all previous selections
- ▶ HCUPnet home - **keep** all previous selections
- ▶ HCUPnet home - **clear** all previous selections

HCUPnet also provides
information on ED
visits for some states.

State statistics - 2004 Aggregate (all States combined)

All ED visits (those that resulted in admission to the hospital and those that did not)

Outcomes for all discharges

	All ED Visits	Admitted to the hospital from the ED	Discharged from the ED
Total number of discharges	25,870,058	4,038,847	21,831,211
LOS (length of stay), days (mean)	0.9	4.9	0.1
Charges, \$ (mean)	4,152	21,416	948
Died during ED visit	38,018 (0.17%)	N/A	38,018 (0.17%)
Died during hospital stay	134,598 (3.33%)	134,598 (3.33%)	N/A
Admitted to hospital from ED	4,038,847 (15.61%)	4,038,847 (100.00%)	0 (0.00%)



United States Department of Health & Human Services



Agency for Healthcare Research and Quality

Advancing Excellence in Health Care

www.ahrq.gov

Sea



H-CUPnet

National information on measures of health care quality based on the NIS, using the AHRQ Quality Indicators (QIs)

HCUPnet Home

Select indicator

Select PQIs/IQIs/PSIs/PDIs

Indicator Selection

For which indicators would you like national benchmarks?

Prevention Quality Indicators - PQIs (ambulatory care sensitive conditions)

- ▶ Detailed statistics for 2004
- ▶ Detailed statistics for 2003
- ▶ Trends for 1994, 1997, 2000, 2001, 2002, 2003, and 2004

Inpatient Quality Indicators - IQIs (mortality and utilization)

- ▶ Detailed statistics for 2004
- ▶ Detailed statistics for 2003
- ▶ Trends for 1994, 1997, 2000, 2001, 2002, 2003, and 2004

Patient Safety Indicators - PSIs (potentially avoidable complications and adverse events)

- ▶ Detailed statistics for 2004
- ▶ Detailed statistics for 2003
- ▶ Trends for 1994, 1997, 2000, 2001, 2002, 2003, and 2004

Pediatric Quality Indicators - PDIs (measures of health care quality for children)

- ▶ Detailed statistics for 2004
- ▶ Detailed statistics for 2003
- ▶ Trends for 1994, 1997, 2000, 2001, 2002, 2003, and 2004

Defin

PQIs are measures that can be based on discharge data to identify "ambulatory care sensitive conditions." These are conditions for which early intervention can prevent a severe disease. [>more>](#)

IQIs are a set of measures that can be based on discharge data to identify potential complications and adverse events. [>more>](#)

PSIs are measures that can be based on discharge data to identify potentially avoidable complications and adverse events.

PDIs focus on children and adolescents and identify potential complications and adverse events among children.

... and on national-level information on quality of care, based on the AHRQ Quality Indicators.



United States Department of Health & Human Services



Agency for Healthcare Research and Quality

Advancing Excellence in Health Care

www.ahrq.gov

[Skip Navigation](#)

- [AHRQ Home](#)
- [Questions?](#)
- [Contact Us](#)
- [Site Map](#)

Search AHRQ



Welcome to H-CUPnet

HCUPnet is a free, on-line query system based on data from the Healthcare Cost and Utilization Project (HCUP). It provides access to health statistics and information on hospital inpatient and emergency department utilization.

Begin your query here -

Statistics on Hospital Stays

▶ [National Statistics on All Stays](#)

Create your own statistics for national and regional estimates on hospital use for all patients from the HCUP Nationwide Inpatient Sample (NIS). [Overview of the Nationwide Inpatient Sample \(NIS\)](#)

▶ [State Statistics on All Stays](#)

Create your own statistics on stays in hospitals for participating States from the HCUP State Inpatient Databases (SID). [Overview of the State Inpatient Databases \(SID\)](#)

▶ [Quick National or State Statistics](#)

Ready-to-use tables on commonly requested information from the HCUP Nationwide Inpatient Sample (NIS), the HCUP Kids' Inpatient Database (KID), or the HCUP State Inpatient Databases (SID).

Statistics on Emergency Department Use

▶ [State Statistics on All ED Visits](#)

Create your own statistics on emergency department visits for participating States from the HCUP State Emergency Department Databases (SEDD) and the SID. [Overview of the State Emergency Department Databases \(SEDD\)](#)

▶ [Quick State Statistics](#)

Ready-to-use tables on commonly requested information from the SEDD and SID.

AHRQ Quality Indicators (QIs)

Visit HCUPnet at:

<http://hcupnet.ahrq.gov>

First Time Visitor?

[HCUPnet overview](#)

[How does HCUPnet work?](#)

[HCUPnet tutorial](#)

[HCUPnet methodology?](#)

What's New?

- New cost information for national hospital stays for 2005.
- 2005 nationwide data now available.
- Information on use of Emergency Departments from selected States.
- 2004 nationwide data on AHRQ Quality Indicators.
- 2005 data for selected States.
- Payer path - statistics by payer, including dually eligible.
- 2003 data for Kids' Inpatient Database (KID).



H-CUP
HEALTHCARE COST AND UTILIZATION PROJECT

[More information on HCUP data, tools, and reports](#)

What is HCUP?

Brief description - what is HCUP?
Want to purchase data to do your own analysis?

The statistics in HCUPnet would not be possible without statewide data collection projects that provide data to HCUP.

HCUPnet is based on aggregate

What types of questions can HCUPnet answer?

- What are the *most common conditions* treated in hospitals in my state?
- What are the *most expensive* conditions? procedures?
- *How many* CABGs were performed in 2003?
- What *percentage* of hospitalizations are *uninsured*?
- For *what conditions are uninsured* patients hospitalized? patients covered by *Medicaid*?
- What is the *trend* in hospitalizations for MRSA?
- What is the *cost* of C-section versus vaginal deliveries?
- What *types of hospitals* treat what kinds of patients?
- What types of patients are seen in the *emergency department* and then admitted to the hospital?

For more information

- General Technical Assistance—HCUP User Support
 - E-mail: hcup@ahrq.gov
 - Phone: 1-866-290-HCUP (4287)
- Anne Elixhauser—
 - E-mail: anne.elixhauser@ahrq.hhs.gov