



Agency for Healthcare Research and Quality

Advancing Excellence in Health Care

www.ahrq.gov

Hands-on Tool Training: State Snapshots

State Healthcare Quality Improvement Workshop:
Tools You Can Use to Make a Difference
January 17-18, 2008

Marguerite Barrett, M.Sc.,
Thomson Healthcare (Medstat)



Overview

- State Snapshots
 - State-level measures from NHQR
 - Technical challenges

- Maine Quality Forum
 - Hospital-level measures
 - Technical challenges scaling the State Snapshot application to the hospital level



Technical Challenges of the NHQR State Snapshots

1. Given the wide range of state-level measures in the NHQR, how do we summarize the information?
2. How do we present the material to a general audience?
3. How do we build a web environment that is easily updated as material changes?



How do we summarize the NHQR measures?

- Decide which NHQR measures belong with each composite
 - Overall, type of care, setting of care, care by clinical area
- Classify state performance for each measure
 - Calculate all-state and regional averages
 - Determine if the state is statistically better than average, average, and worse than average
- Score state across measures in a composite
 - 1 point for each NHQR measure that was better than average.
 - 0.5 point for each NHQR measure that was at average.
 - 0 points for each NHQR measure that was worse than average.
 - Sum points and divide by the number of measures



How do we present the material?

- Composite-specific information
 - Graphic “speedometers” to display current and baseline score for all-state and regional comparison
 - Best performing states table
- Measure-specific information
 - Data tables “behind” composite speedometers
 - Strongest/weakest measures
 - Ranking table on selected measures



How do we build a web environment that is easily updated?

- Web pages are data driven.
- XML files contain measure titles, composite names, state-level data, and information on associated graphic files.
- Template web page displays appropriate content based on selection of state and composite measure.
- Text and graphic updates are made by updating XML files.



Technical Challenges of the MQF Web Site

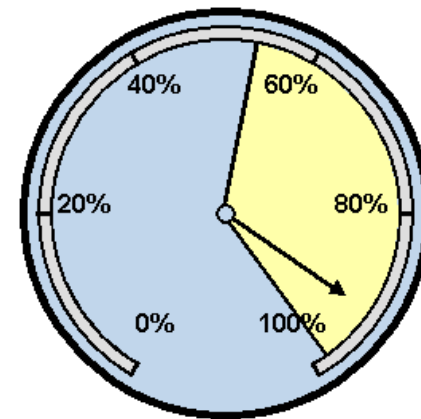
- Reporting by hospital has unique challenges
 - Small N (hospitals)
 - Small n (cases)
- Statistical test within an individual measure – not possible
- Statistical test for difference within composite – only possible for some composites

MQF Web Site – Clinical

■ QIO Clinical Measures

- Composites for heart disease, pneumonia, preventing infections
- Statistical test (logistic regression) for difference within composite

Performance Meter:
Overall Heart Disease Care



Hospital X is an Average Performer in Overall Heart Disease Care



MQF Web Site - Nursing

■ Nursing Data

- No statistical test for differences
- Data tables with rates for the hospital and the average of similar hospitals

MQF Web Site - Consistency

- Consistency of performance meter on 8 clinical and 2 nursing measures reported by most Maine hospitals
- Ranks measures as in the best/lowest 10% of all hospitals

