

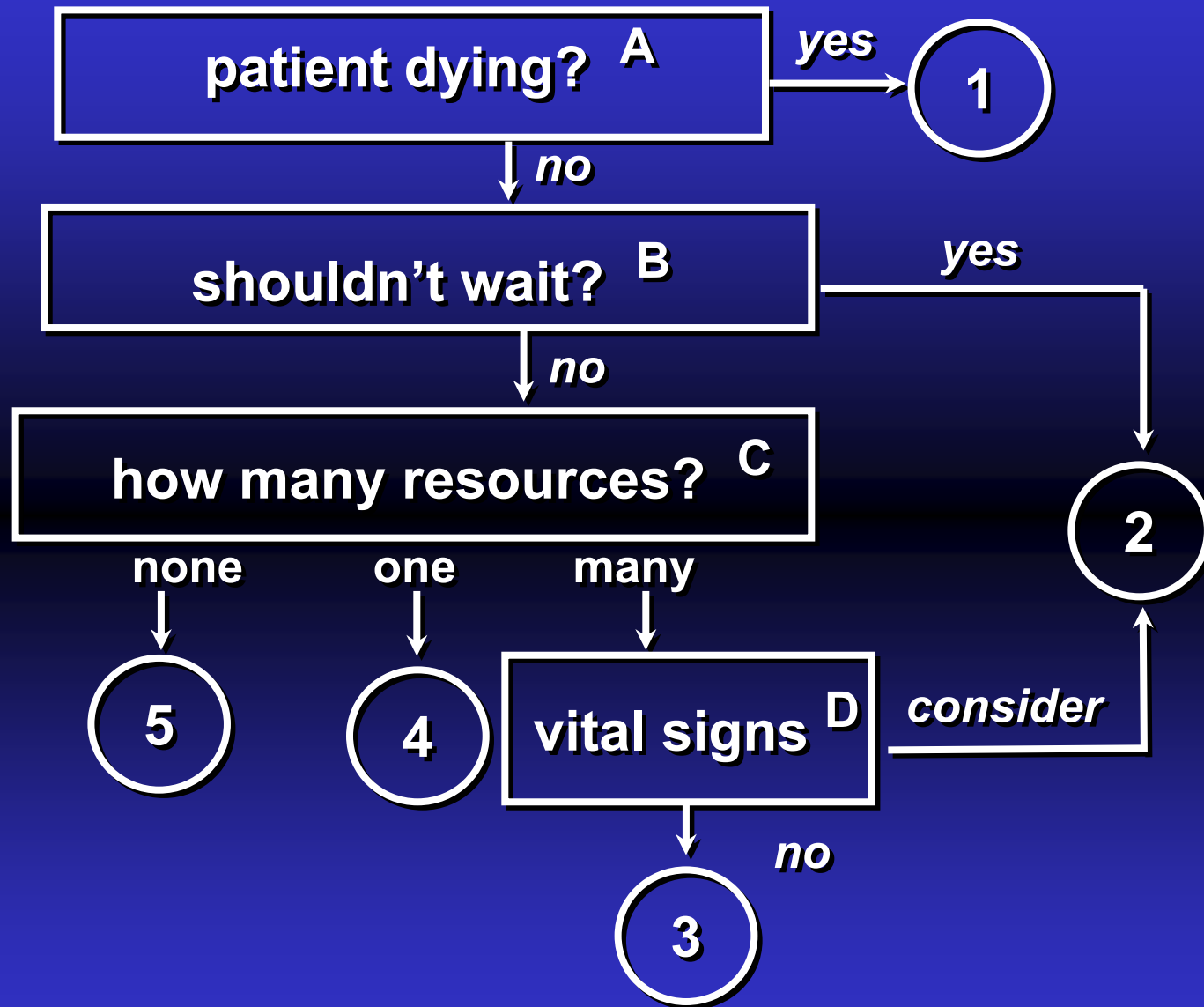
# Transition to Version 4 From Version 3

**Emergency Severity Index**



# **Why the change to version 4?**

- **2 levels of ESI Level 2 patients**
  - **Physiologically UNSTABLE - Critically ill, but still has a pulse, is breathing and is conscious**
  - **Physiologically STABLE - High risk patients, severe pain or distress, or new onset mental status change (but can wait for a short period of time)**



# ESI Level 1 Criteria

- **Intubated**
- **Apneic**
- **Pulseless**
- **Non-Responsive**

# Research Project

- **Multi-site project (five EDs)**
- **Sites used ESI for a minimum of 3 years**
- **Over 500 Level 2 patients were prospectively enrolled**
- **Patients were divided into 2 groups**
  - **Those that received immediate life-saving interventions**
  - **Those that did NOT receive immediate life-saving interventions**

# **Definition:**

## **NOT Life-Saving Interventions**

- **Diagnostic Tests**
  - ECG
  - Lab Studies
- **Oxygen**
- **Monitor**
- **IV access**
- **Medications**
  - ASA
  - Nitroglycerine
  - Pain Medications
  - Antibiotics
  - Heparin

# **Life-Saving Interventions**

- **Intubation**
- **Vasoactive medications**
- **Cardioversion**
- **Pacer pads**

# **Predictors of Immediate Life-Saving Interventions**

- **Triage nurses' prediction of the need for immediate interventions**
- **Severe respiratory distress**
- **SpO<sub>2</sub> less than 90%**



# **Decision Point A**

**Immediate life-saving intervention required**

**Airway**

**Emergency medications**

**Other hemodynamic interventions**

**(IV, supplemental O<sub>2</sub>, monitor,  
ECG or labs DO NOT count)**

# **Decision Point A**

**Immediate life-saving intervention required**

**Clinical conditions: intubated, apneic, pulseless, severe respiratory distress,  $\text{SpO}_2 < 90$ , acute mental status changes, or unresponsive**

**Unresponsiveness: a patient that is either**  
**(1) nonverbal and not following commands (acutely); or**  
**(2) requires noxious stimulus (PU on AVPU) scale.**

# **Decision Point A**

- A. Immediate life-saving intervention required:  
airway, medication, other hemodynamic interventions; or the following clinical conditions  
intubated, apneic, pulseless, severe respiratory distress,  $\text{SpO}_2 < 90$ , acute mental status changes, unresponsive**
- B. Unresponsiveness is defined as a patient that is either:**
- (1) Nonverbal & not following commands (acutely)**
  - (2) Requires noxious stimulus (P) or unresponsive (U) on AVPU scale**

# **Was that the only change?**

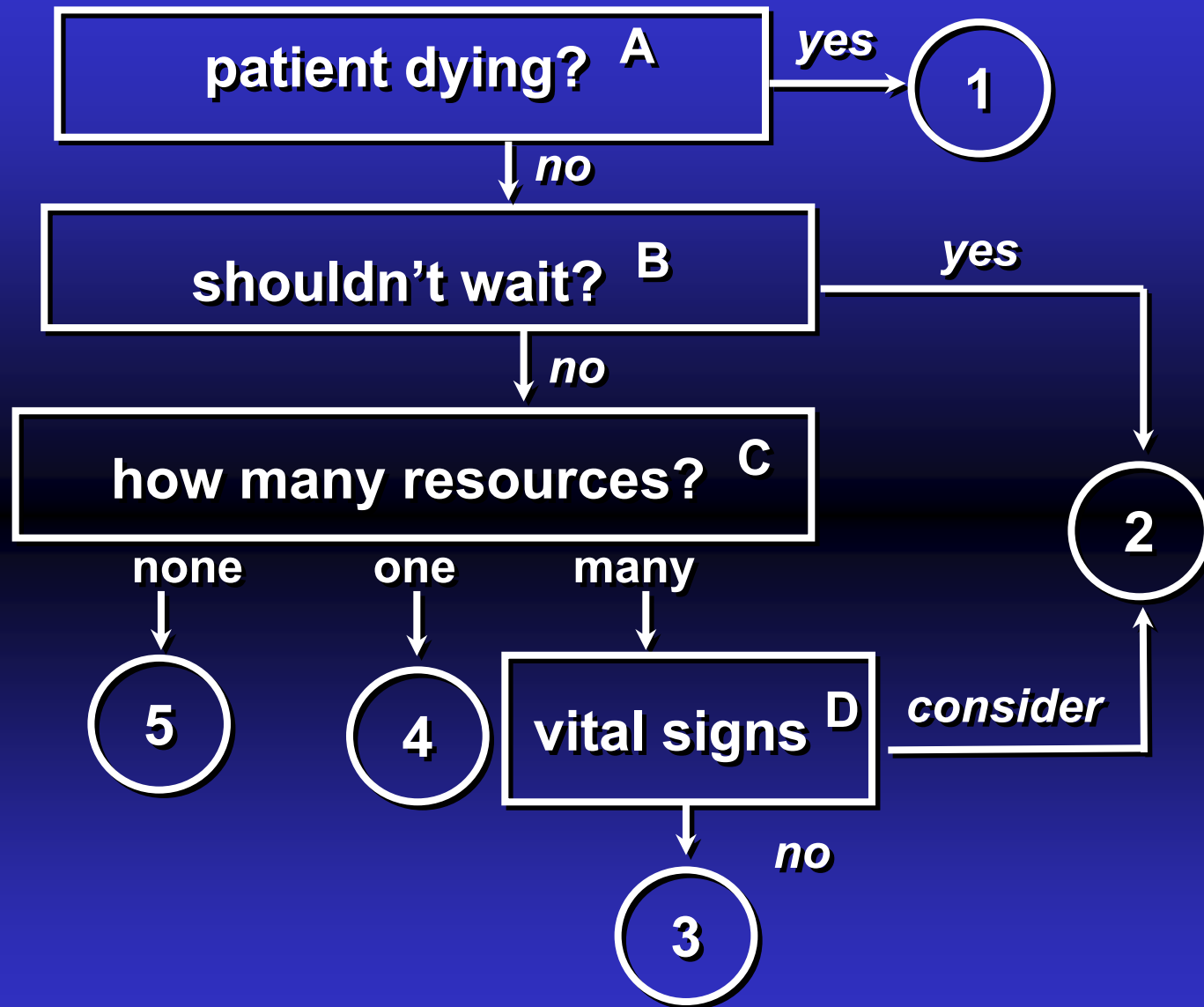
- **Pediatric fever criteria were updated**
- **ACEP Pediatric Fever Guidelines**
  - **Annals of Emergency Medicine, October 2003**

# **Pediatric Fever Criteria**

**1 to 28 days of age: Assign at least ESI 2 if temp  $>38.0^{\circ}\text{C}$  ( $100.4^{\circ}\text{F}$ )**

**1 to 3 months of age: Consider assigning ESI 2 if temp  $>38.0^{\circ}\text{C}$  ( $100.4^{\circ}\text{F}$ )**

**3 months to 3 yrs of age: Consider assigning ESI 3 if temp  $>39.0^{\circ}\text{C}$  ( $102.2^{\circ}\text{F}$ ), or incomplete immunizations or no obvious source of fever**



## Notes:

- A. Immediate life-saving intervention required: airway, medications, other hemodynamic interventions; any of the following clinical conditions: intubated, apneic, pulseless, severe respiratory distress,  $\text{SpO}_2 < 90$ , acute mental status changes, or unresponsive.

Unresponsiveness: a patient that is either: (1) nonverbal and not following commands (acutely) (2) requires noxious stimulus (P) or unresponsive (U) on AVPU scale.

- B. High risk situation is a patient you would put in your last bed.

Severe pain/distress is determined by clinical observation and/or patient rating pain  $\geq$  7/10.

#### D. Danger Zone Vital signs

Consider uptriage to ESI 2 if any vital sign criterion is exceeded.

#### Pediatric Fever Considerations

1 to 28 days of age: assign at least ESI 2 if temp  $>38.0^{\circ}\text{C}$  ( $100.4^{\circ}\text{F}$ )

1-3 months: consider assigning ESI 2 if temp  $>38.0^{\circ}\text{C}$  ( $100.4^{\circ}\text{F}$ )

3 months to 3 yrs: consider assigning ESI 3 if temp  $>39.0^{\circ}\text{C}$  ( $102.2^{\circ}\text{F}$ ), or incomplete immunizations, or no obvious source of fever.